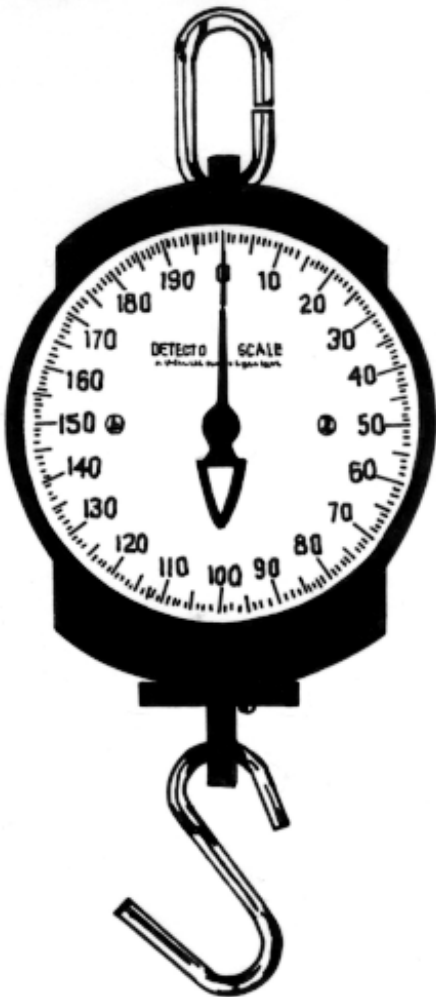


Hanging Dial Scales

Aluminum Dial Scale

Ruggedly built, general utility scale for multipurpose, bulk weighings. Will weigh large or small quantities with speed and accuracy. Extra large, clear aluminum dial. Durable heavy cast iron protective housing to enclose precision parts from dust and weather elements.

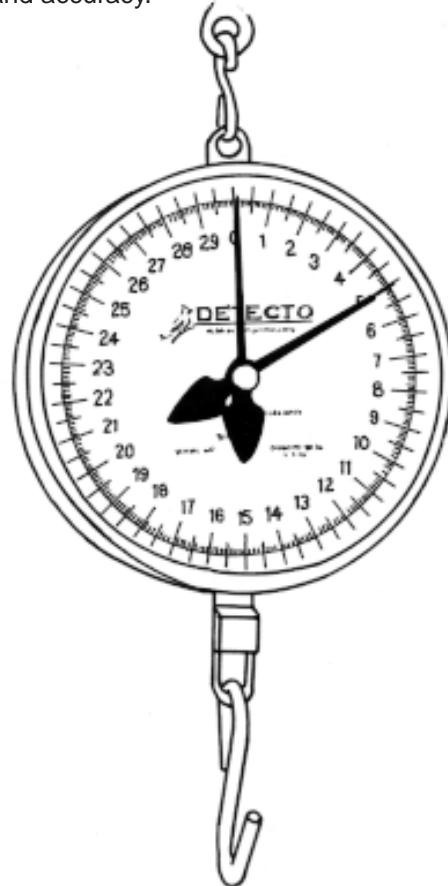


Model: 11S200H
Capacity: 200 lb x 1/2 lb
Dial Size: 7"

Model: 11S400H
Capacity: 400 lb x 1 lb
Dial Size: 7"

Utility Scale

This rugged hanging scale was designed for heavy-duty use and is an ideal scale for a variety of uses. The 8" dial is easy-to-read and incorporates an adjustable pointer which may be set anywhere on the dial in order to offset additional weight. Both net and gross weights are indicated fast and accurately with knife-blade pointers. The dial mechanism is protected by a lens while the plastic housing eliminates dents and scratches thereby enhancing long-term use and accuracy.



Model: MCS-60M
Capacity: 60 lb at 2 revolutions

Graduations: 1/10 lb
Chart: 30 lb x .1 lb
Dial Size: 8"



With 4" "S" hook and adjustable tare pointer

Cardinal Scale reserves the right to improve, enhance and modify features and specifications without prior notice.

MCS CALIBRATION SPECIFICATIONS

No. 0031-A169-PS

Rev. C

Date 9/27/05

App By: Gary Garvey

Page 1

MCS CALIBRATION SPECIFICATIONS

All MCS scales must meet the specified tolerance before they can be shipped to a customer.

Please note, not all MCS scales will have the same number of graduations at full capacity, however all MCS scales will have a minimum of 160 graduations. The tolerance for the first 500 graduations will be + or - 1 graduation.

For the 20 lb. capacity scales, 320 grads = 20 lb. 0 oz.

For the 40 lb. capacity scales, 320 grads = 40 lb. 0 oz

For the 10 kg. capacity scales, 400 grads = 10 kg.

The scales will be checked at each quarter revolution, both ascending and descending.

For the 20 lb. capacity scales, the weights checked (in pounds) will be 0, 2 ½, 5, 7 ½, 10, 12 ½, 15, 17 ½, and 20.

For the 40 lb. capacity scales, the weights checked (in pounds) will be 0, 5, 10, 15, 20, 25, 30, 35, and 40.

For the 10 kg. capacity scales, the weight checked (in kilograms) will be 1.250, 2.500, 3.750, 5.000, 6.250, 7.500, 8.750, 10.000.

NOTE: The distance between the lower edge of the index of the pointer and the dial chart face must not be greater than 0.060" at any point in the rotation of the pointer. The index of the pointer is the section of the pointer directly over the graduations on the dial chart.

REVISION HISTORY

ECO NO.	DATE	DESCRIPTION	REV	APPROVED BY
ECR2546	8/15/01	RELEASED FOR PRODUCTION	A	G. GARVEY
22401	8/29/03	320 WAS 500 GRAD, 400 WAS 500 GRAD, 160 WAS 500 GRAD	B	G. GARVEY
- - -	9/27/05	UPDATED TO CURRENT FORM	C	G. GARVEY

STATEMENT OF LIMITED WARRANTY

Detecto Scale warrants its equipment to be free from defects in material and workmanship as follows: Detecto warrants to the original purchaser only that it will repair or replace any part of equipment which is defective in material or workmanship for a period of one **(1) year** from date of shipment. Detecto shall be the sole judge of what constitutes a defect.

During the **first ninety (90) days** Detecto may choose to supply all necessary replacement parts and service during normal week-day working hours at no charge to the buyer.

After the first ninety (90) days Detecto will supply parts and service at the job site provided the owner agrees to pay the Dealer for all travel time, including mileage and test equipment, as well as any expenses incurred over the direct labor of the technician at the job site. This limited warranty honors only labor performed by Detecto authorized dealers.

This warranty does not apply to peripheral equipment not manufactured by Detecto; this equipment will be covered by certain manufacturer's warranty only.

This warranty does not include replacement of expendable or consumable parts. This does not apply to any item which has deteriorated or damaged due to wear, accident, misuse, abuse, improper line voltage, overloading, theft, lightning, fire, water or acts of God, or due to extended storage or exposure while in purchaser's possession. This warranty does not apply to maintenance service. Purchased parts will have a ninety (90) day repair or replacement warranty only.

Detecto may require components be returned to the factory; they must be properly packed and shipping charges prepaid. A return authorization number must be obtained for all returns and marked on the outside of all returned packages. Detecto accepts no responsibility for loss or damage in transit.

Conditions Which Void Limited Warranty

This warranty shall not apply to equipment which:

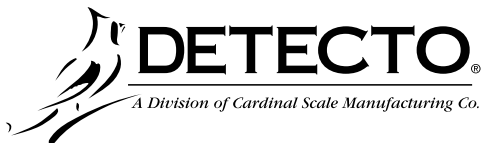
- A.) Has been tampered with, defaced, mishandled or have had repairs and modifications not authorized by Detecto.
- B.) Has had serial number altered, defaced, or removed.
- C.) Has not been grounded according to Detecto's recommended procedure.

Freight Carrier Damage

Claims for equipment damaged in transit must be referred to the freight carrier in accordance with freight carrier regulations.

This warranty sets forth the extent of our liability for breach of any warranty or deficiency in connection with the sale or use of the product. Detecto will not be liable for consequential damages of any nature, including but not limited to, loss of profit, delays or expenses, whether based on tort or contract. Detecto reserves the right to incorporate improvements in material and design without notice and is not obligated to incorporate improvements in equipment previously manufactured.

The foregoing is in lieu of all other warranties, express or implied including any warranty that extends beyond the description of the product including any warranty of merchantability or fitness for a particular purpose. This warranty covers only those Detecto products installed in the forty-eight (48) contiguous continental United States.



Ph. (800) 641-2008
E-mail: detecto@cardet.com
203 E. Daugherty
Webb City, MO 64870

02/06
Printed in USA
D268-WARRANTY-DET



**IF POINTER IS
NOT AT ZERO
TURN THIS
SCREW TO
LEFT OR RIGHT**

8525-M291-O1 Rev A
08/04